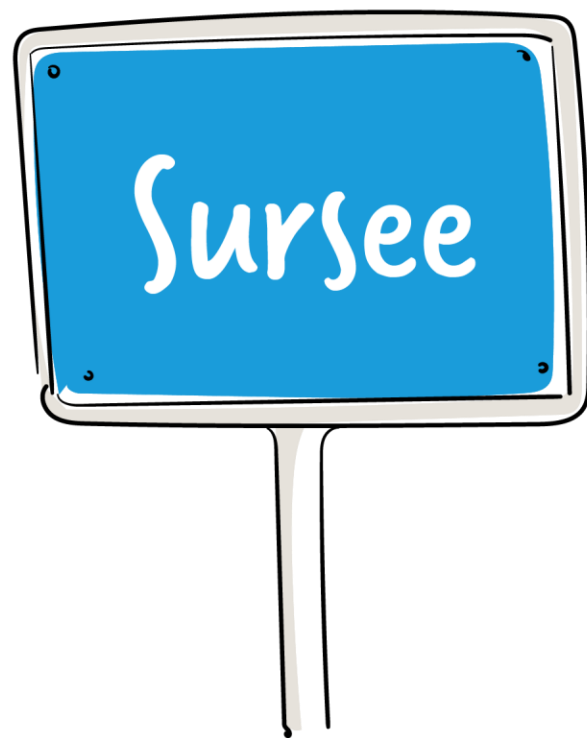
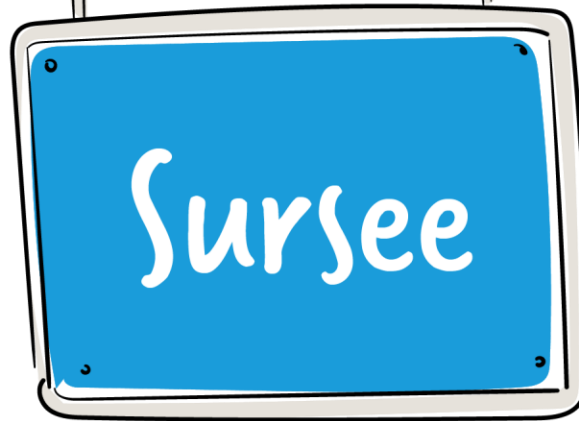
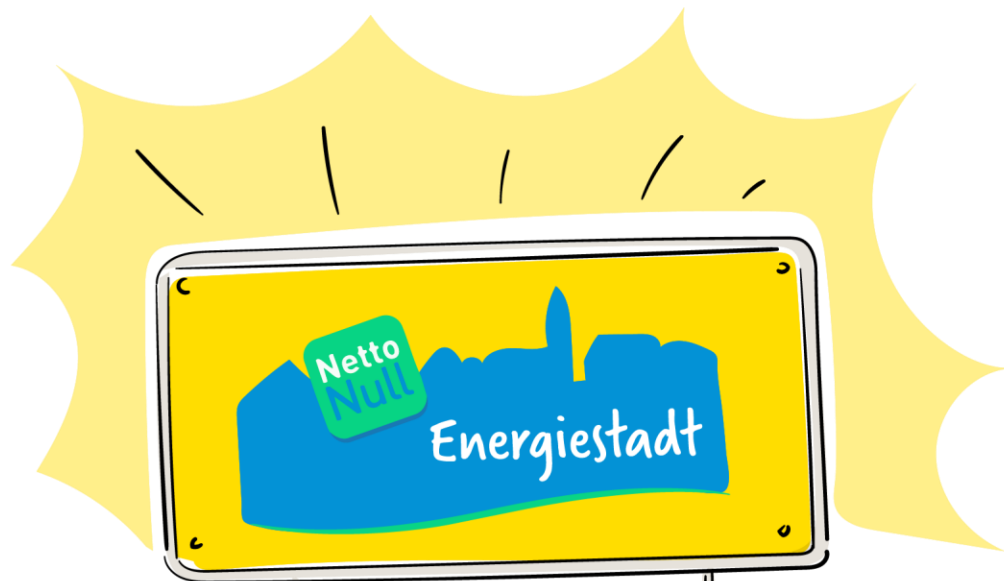




Erdwärmesonden-Strategie Altstadt Sursee

Stratégie relative aux sondes géothermiques
dans la vieille ville de Sursee

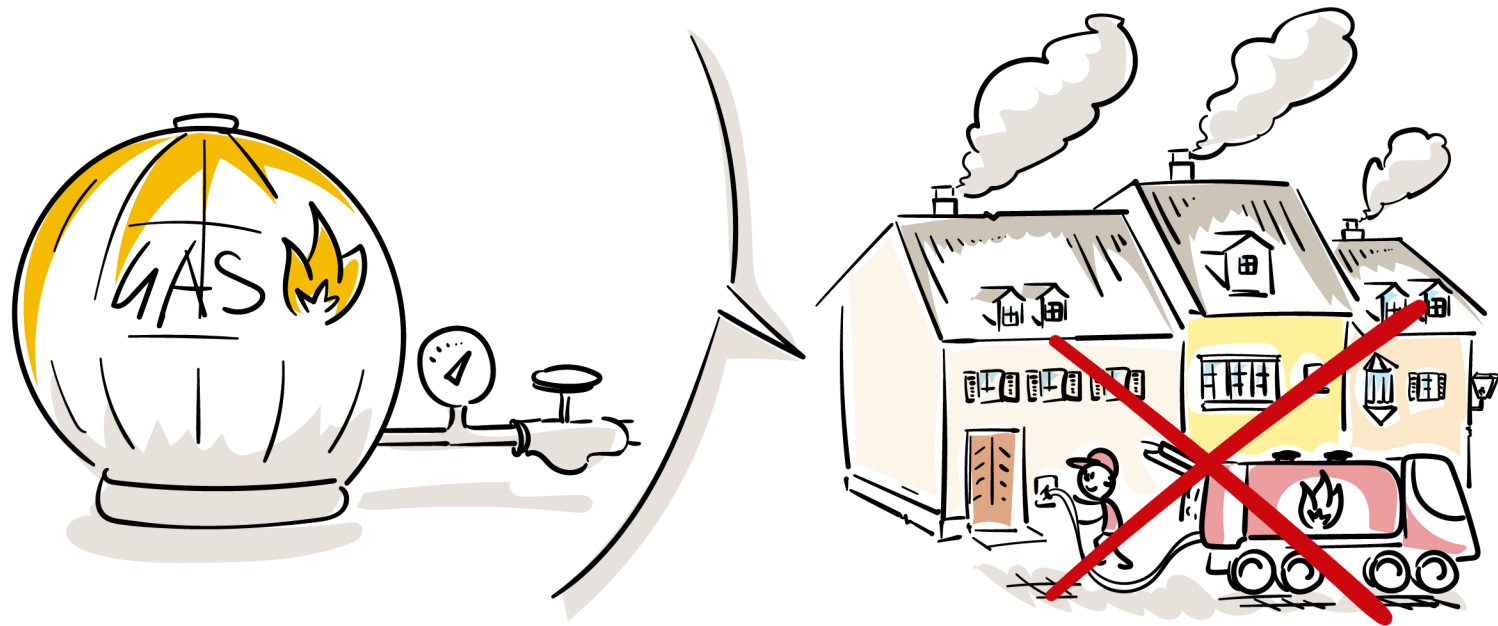


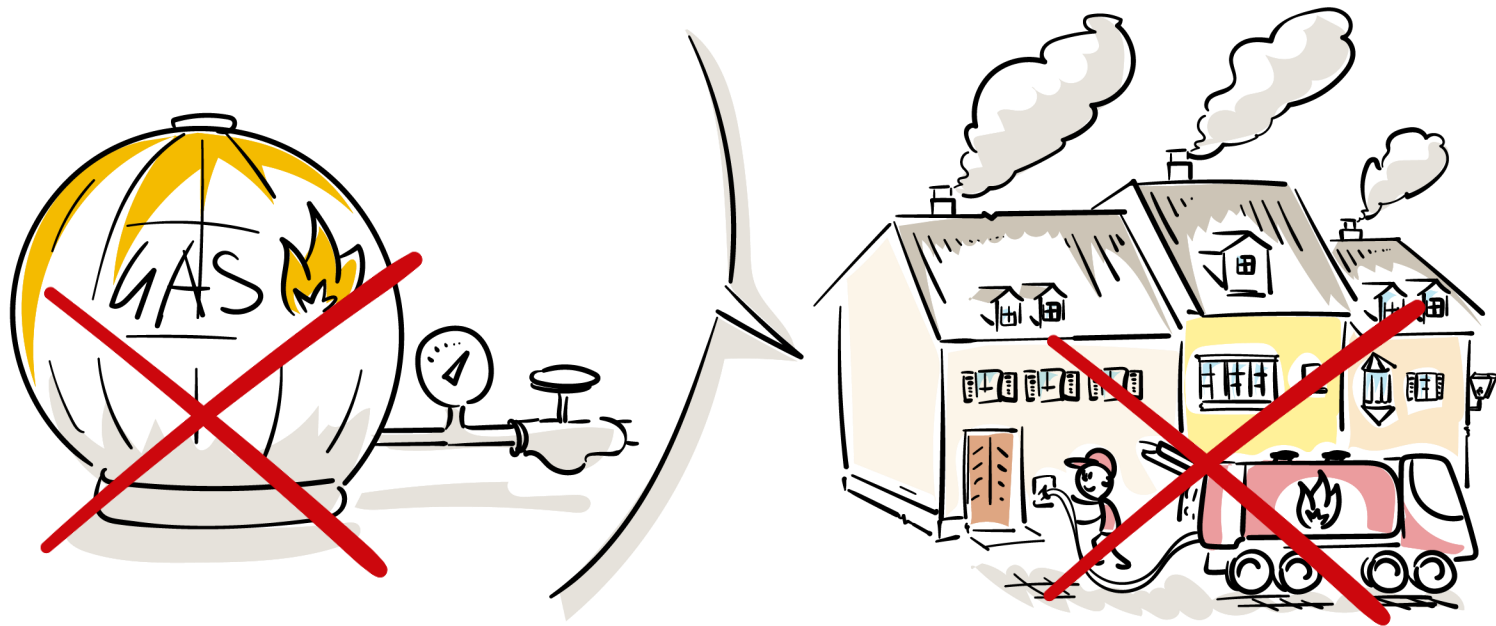


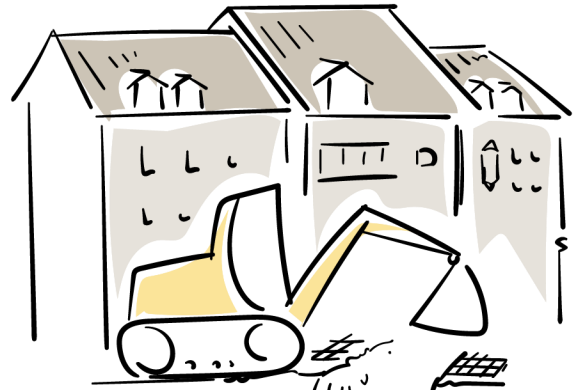








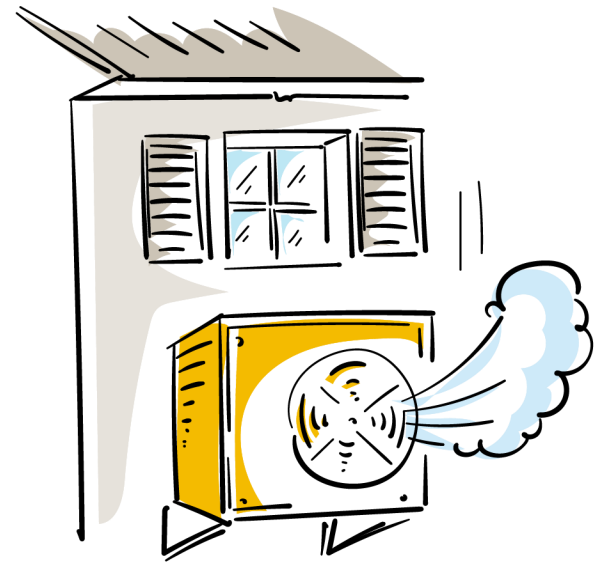
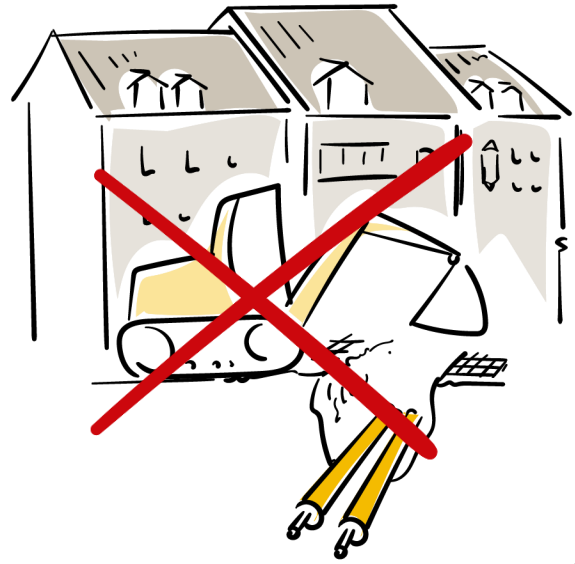


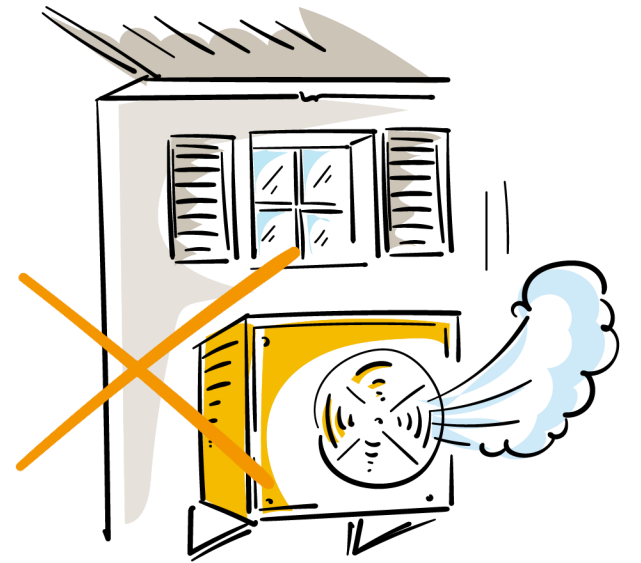
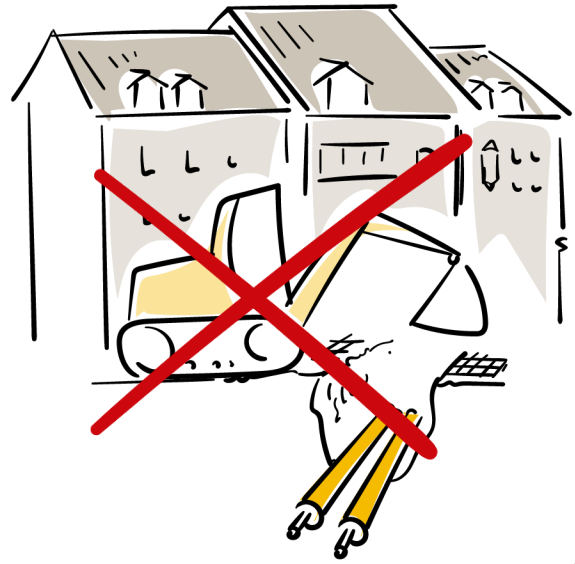


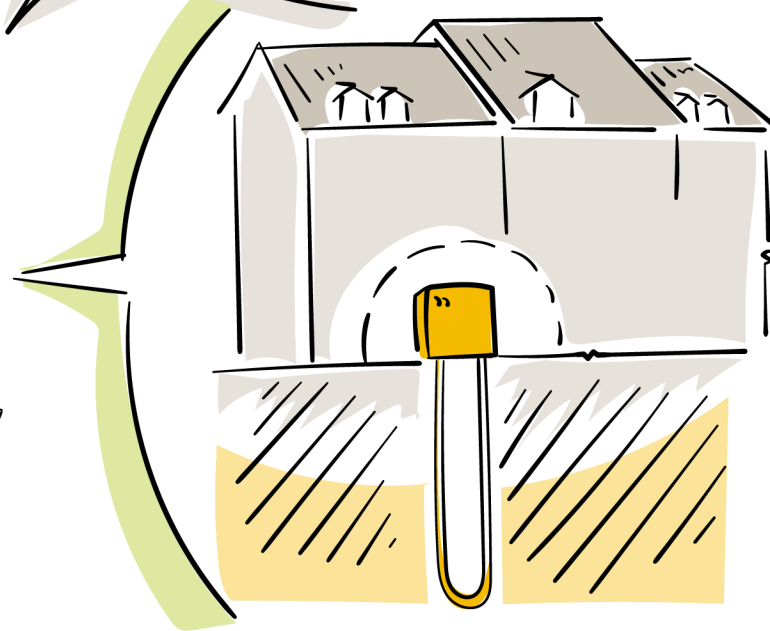
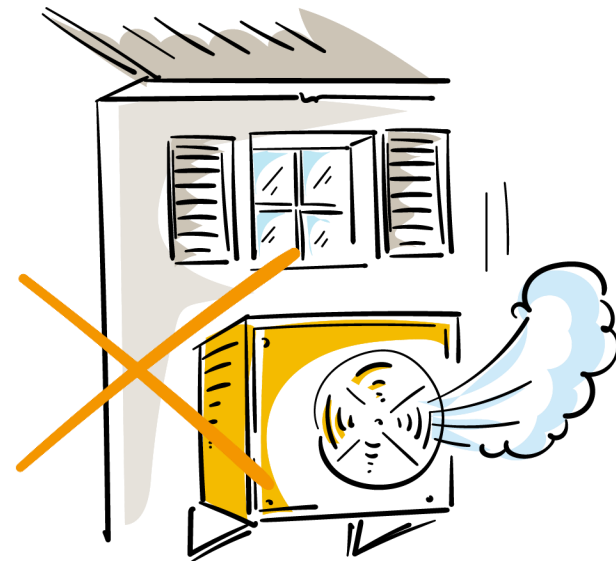


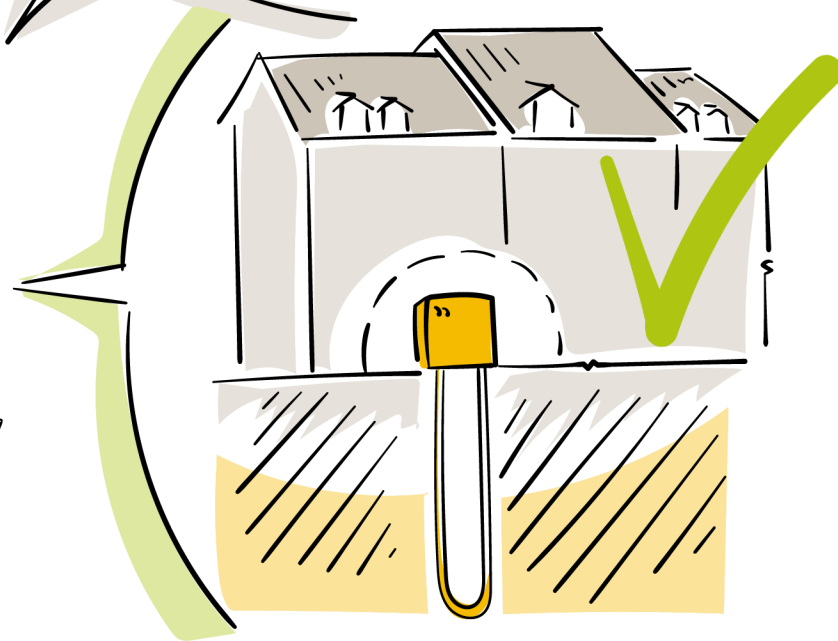
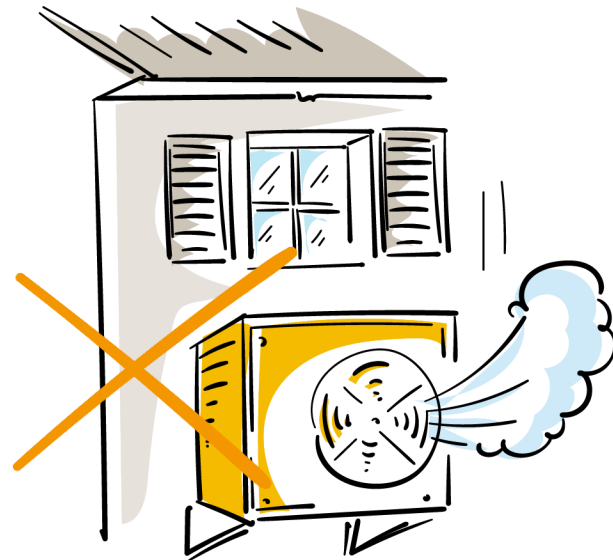


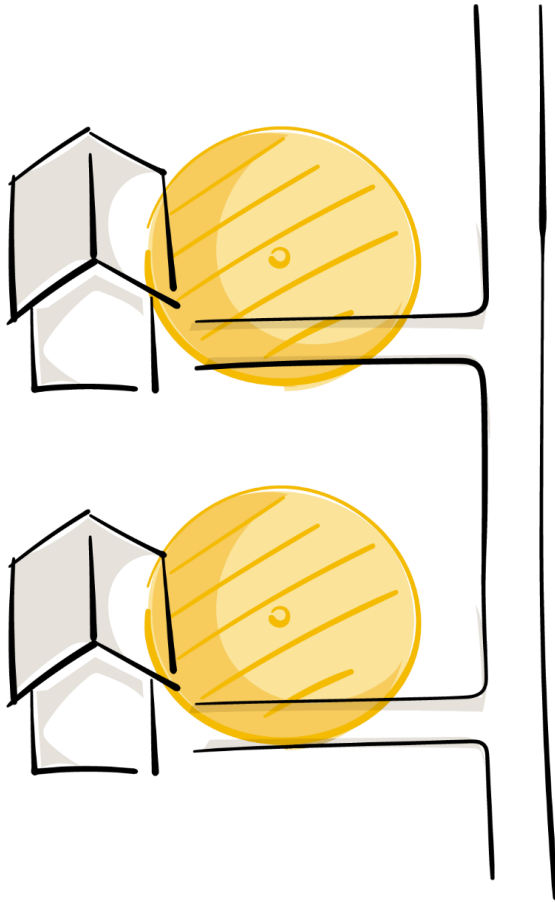




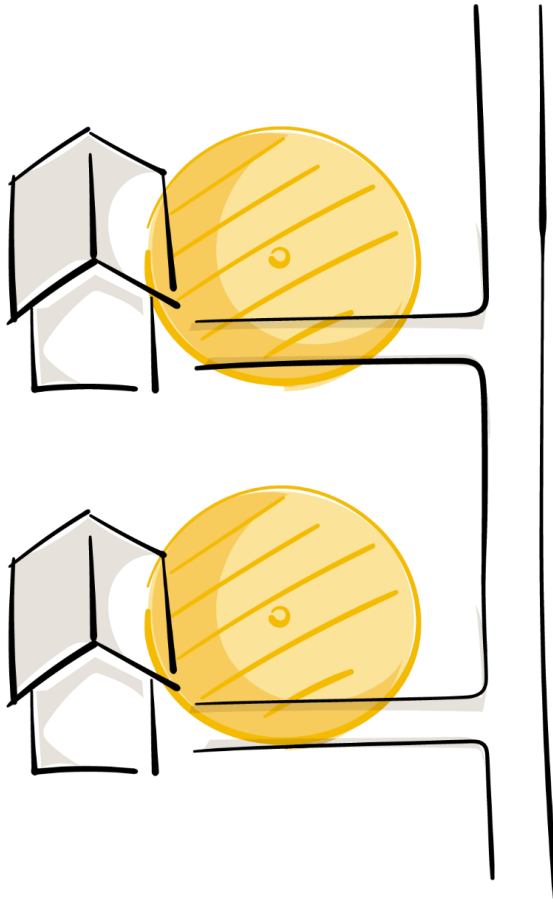




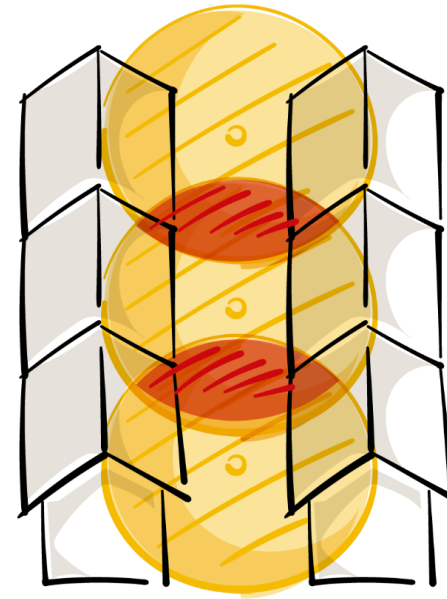




Aussenquartier
quartier périphérique



Aussenquartier
quartier périphérique



Altstadt
vielle ville





Der Mann aus Sursee

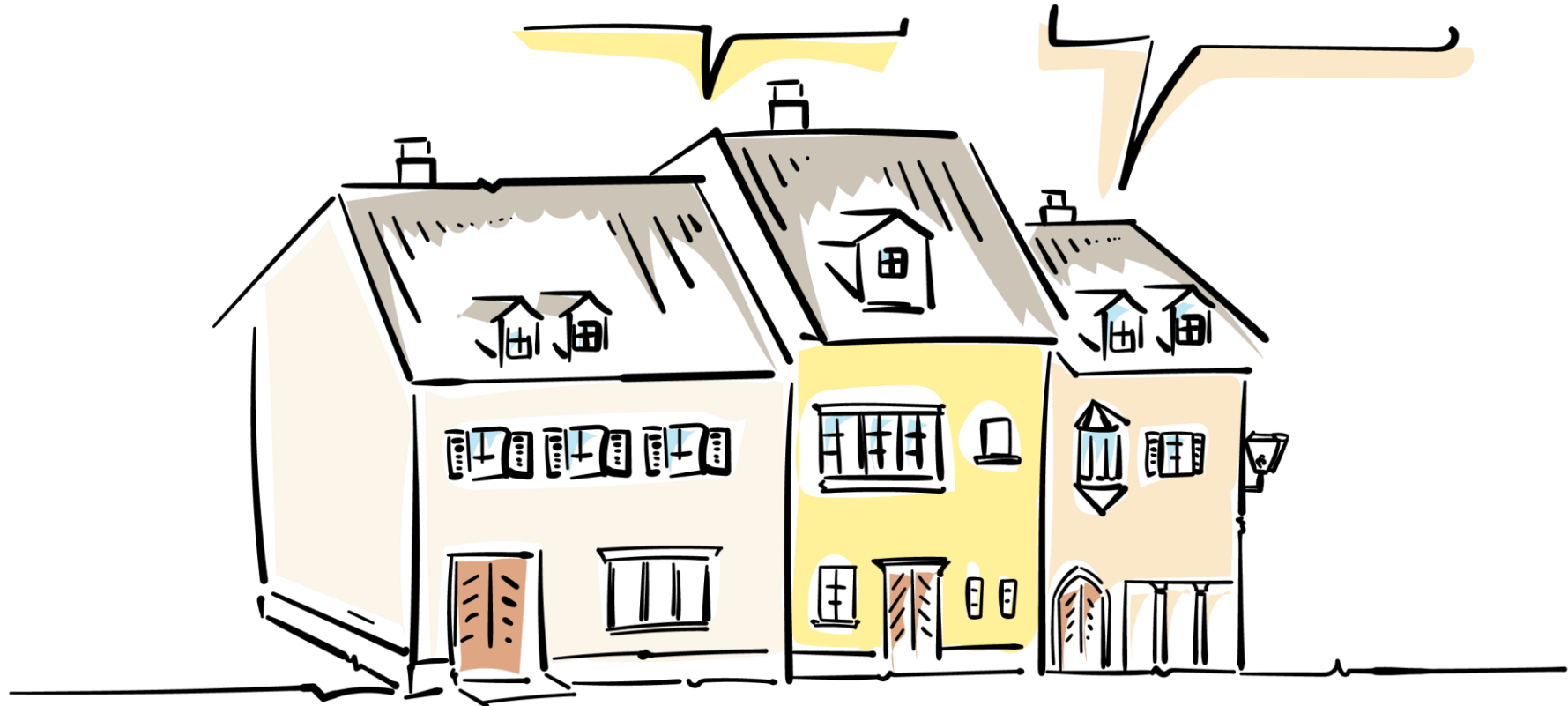




Der Mann aus Sursee



Ursula Sempacher





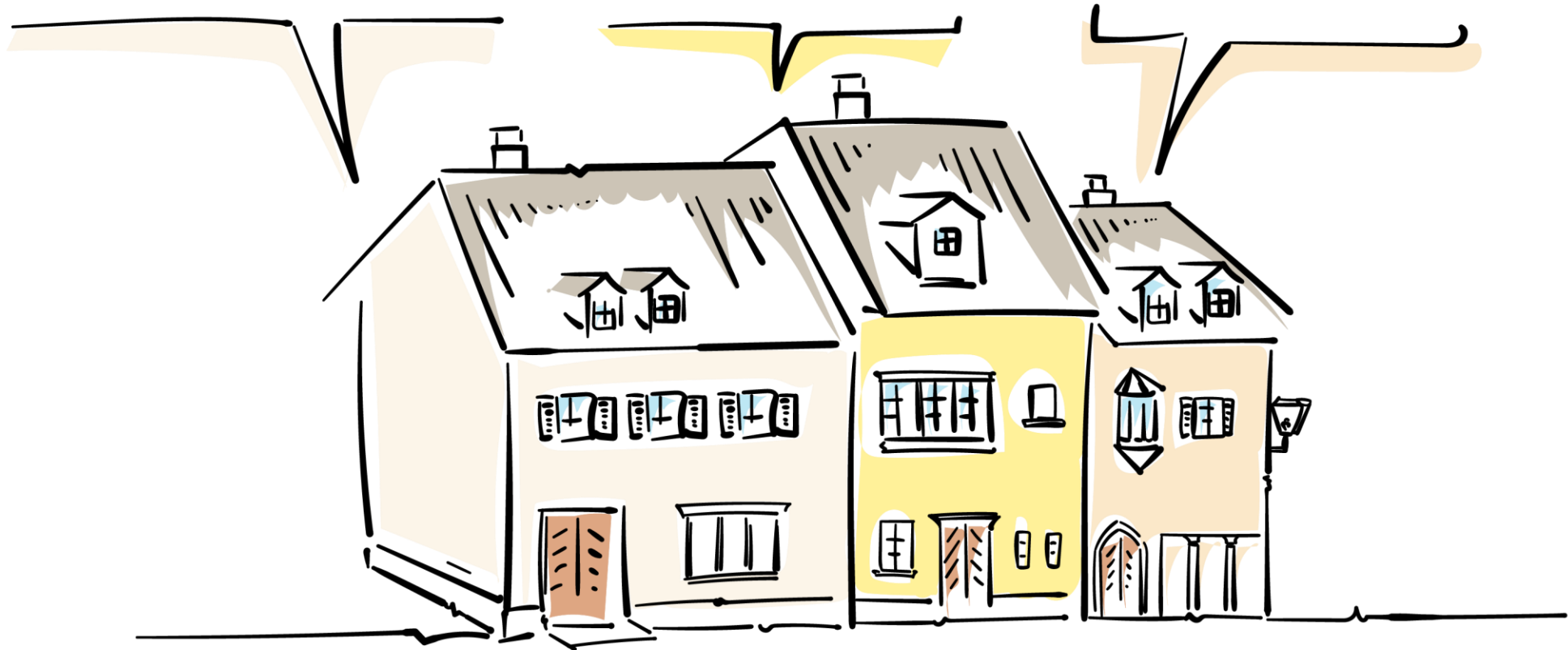
Martin Gansab



Der Mann aus Sursee

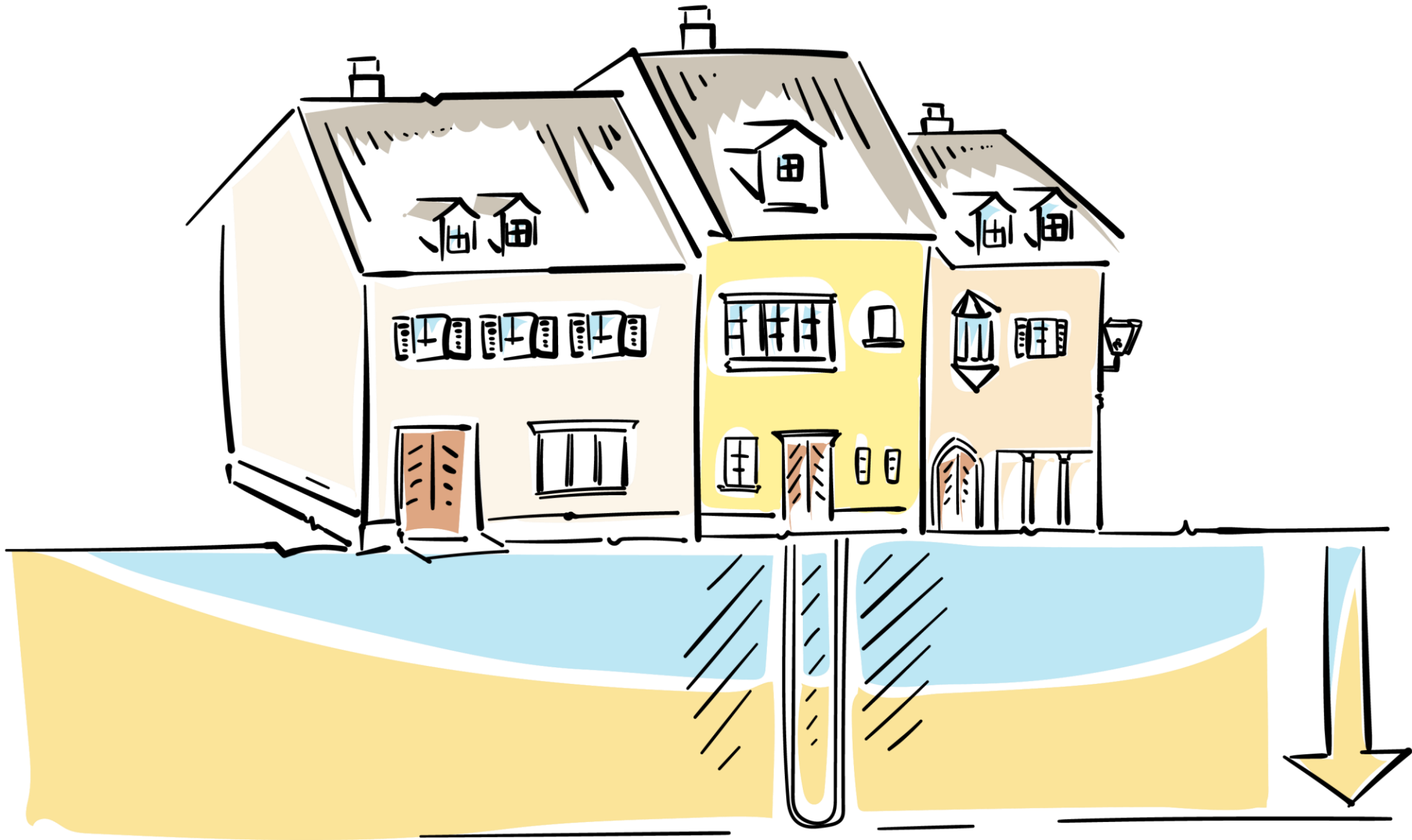


Ursula Sempacher



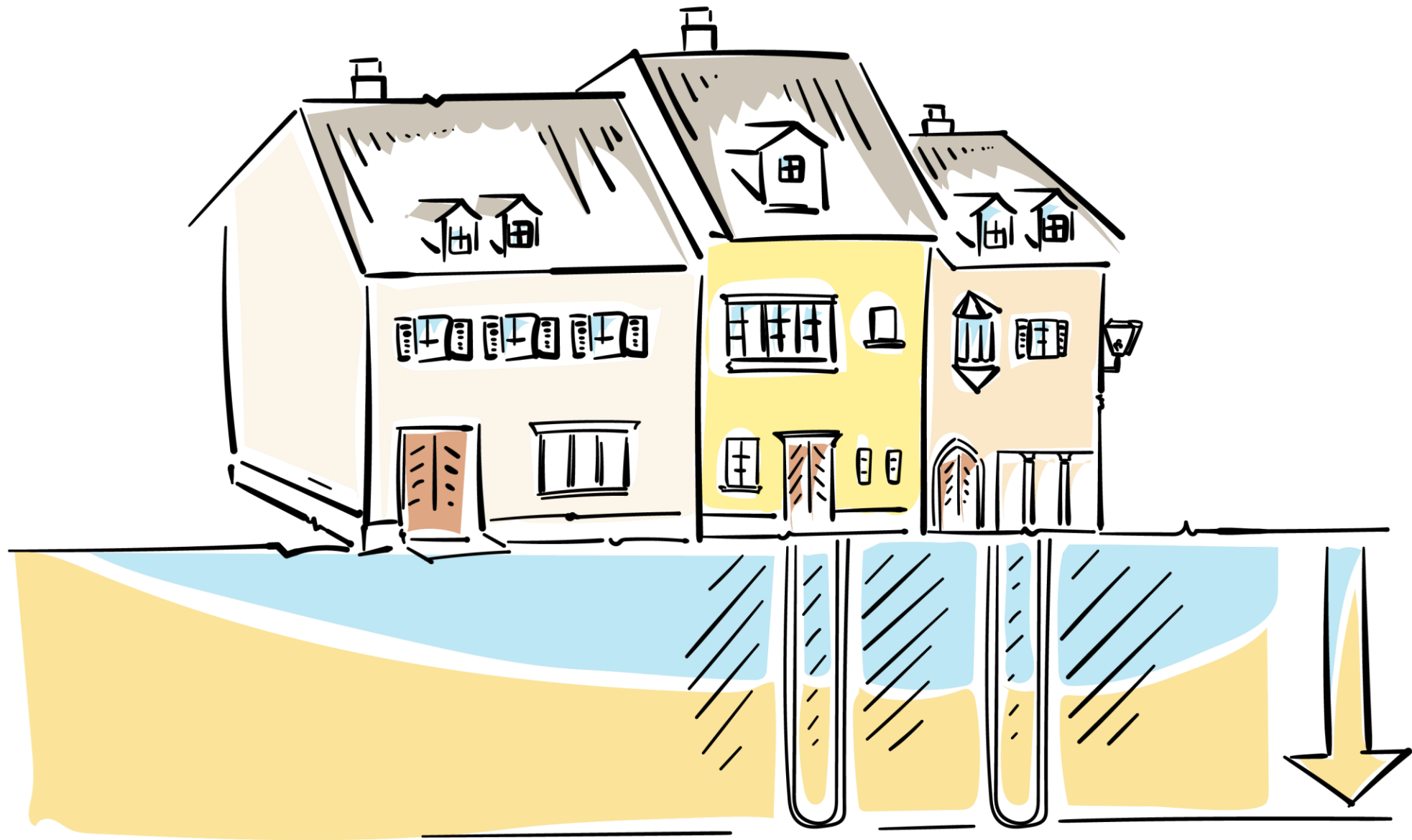


200 Meter/mètres



2026

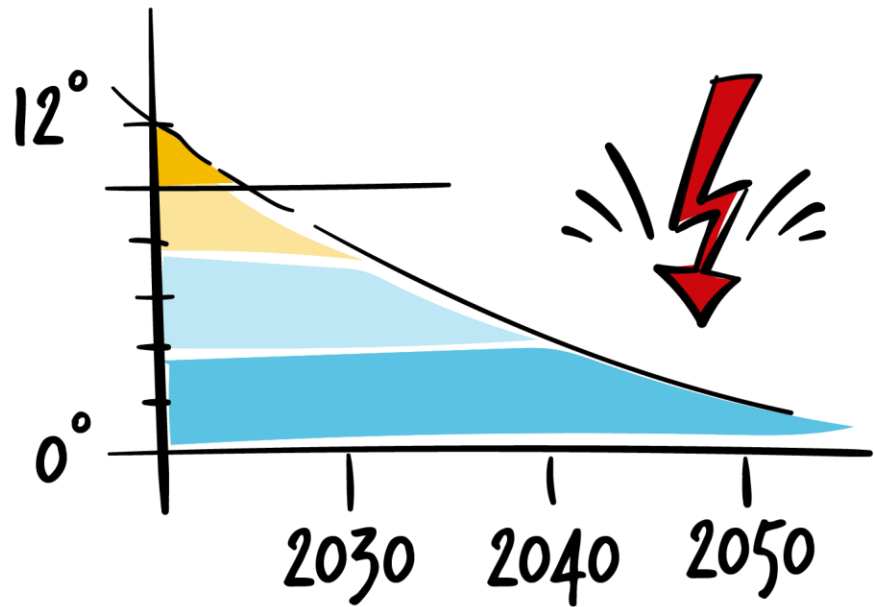
200 Meter/mètres



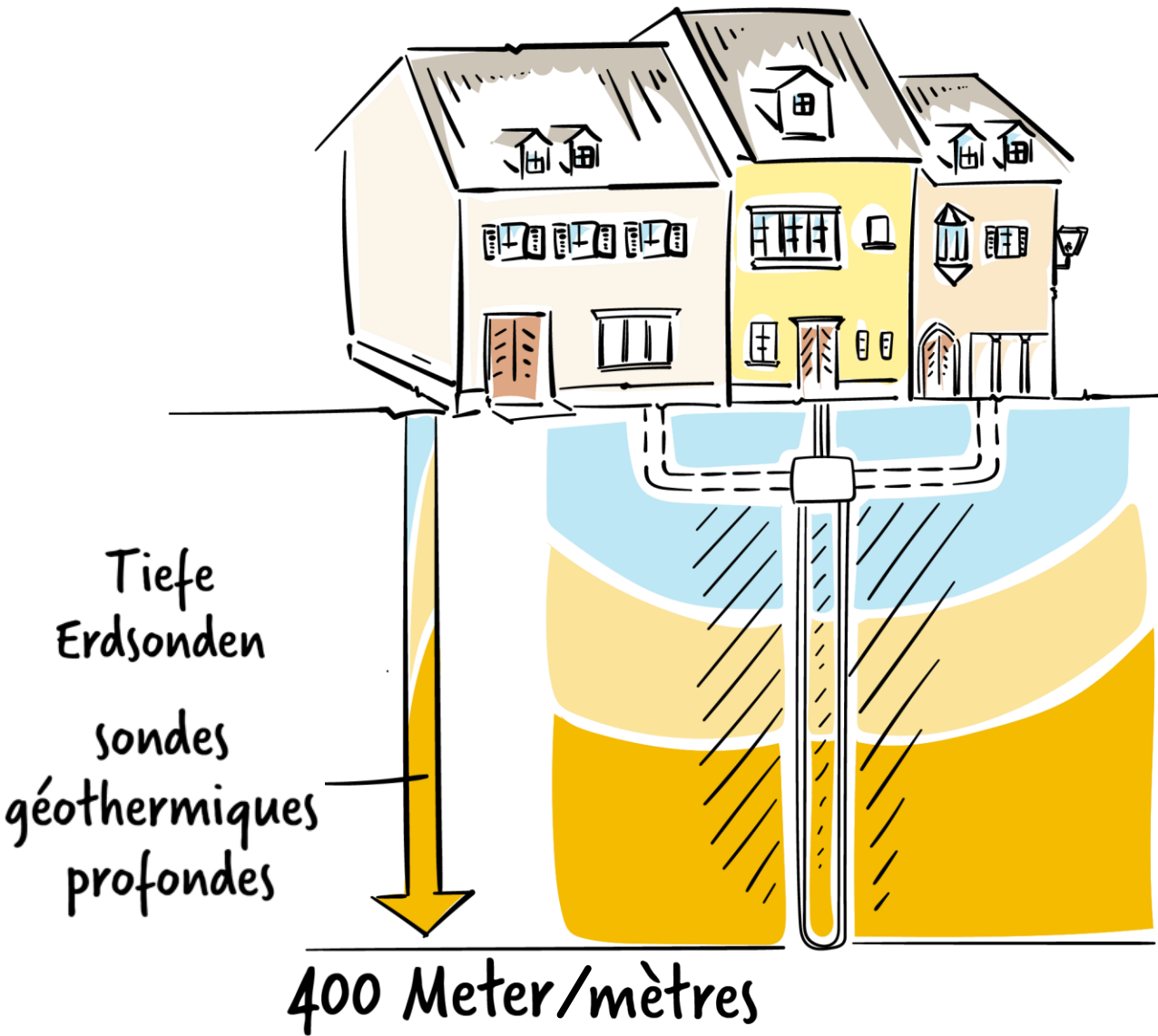
2026

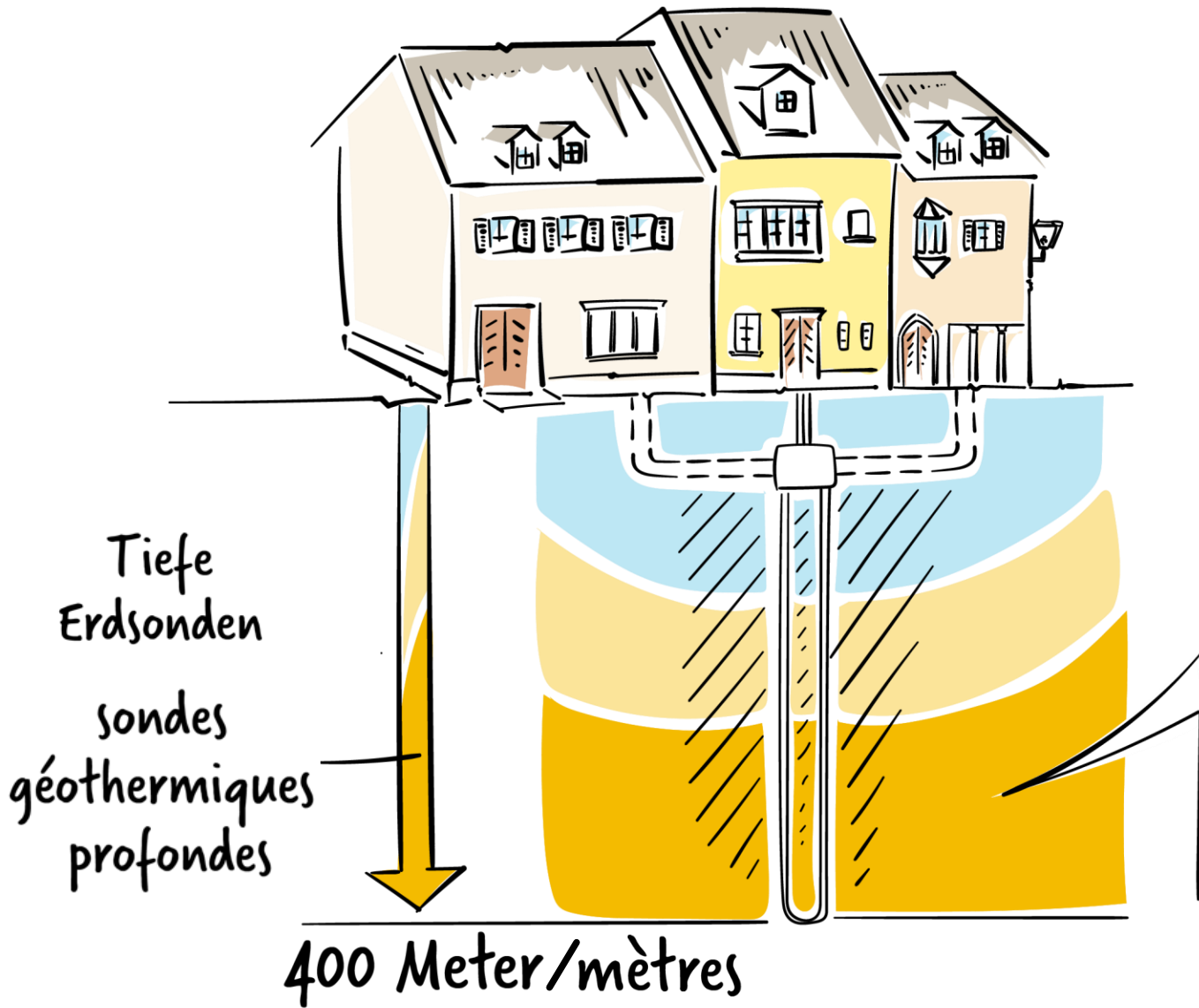
2027

200 Meter/mètres

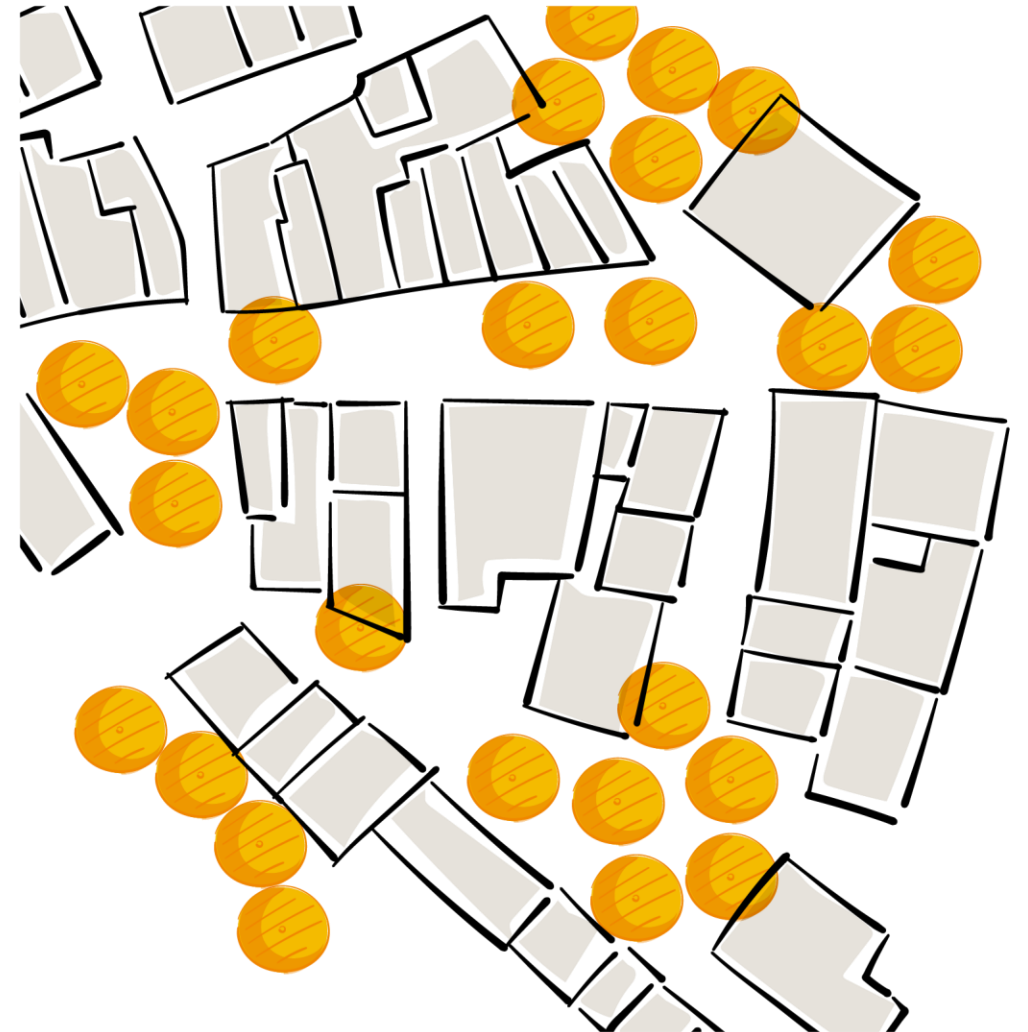




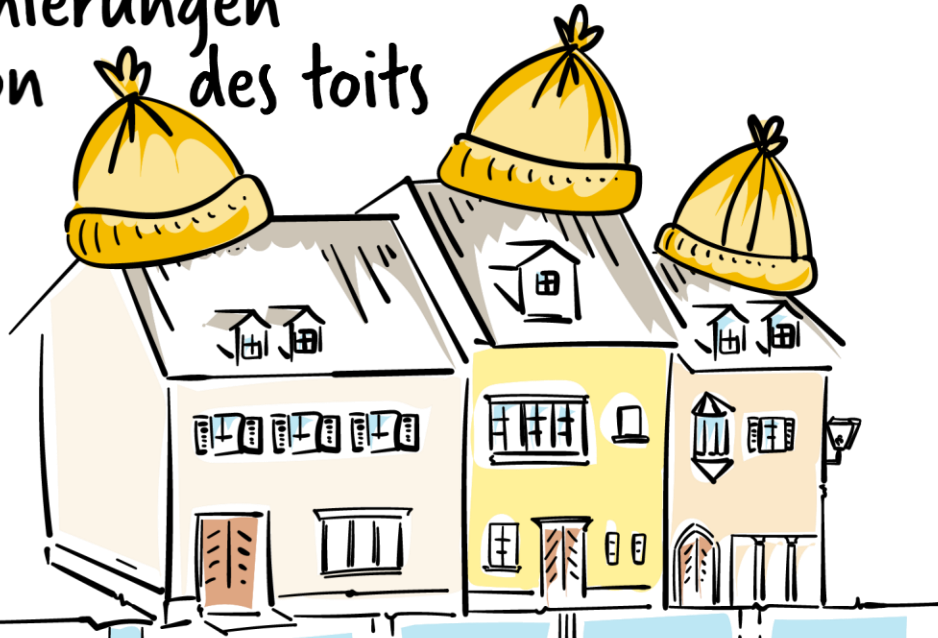




Koordination der Standorte coordination des sites



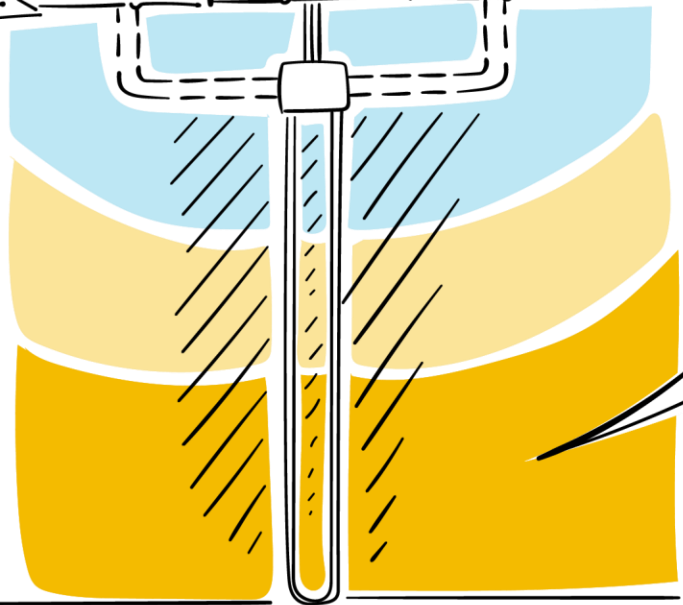
Dachsanierungen
isolation des toits



Tiefe
Erdsonden

sondes
géothermiques
profondes

400 Meter/mètres



Koordination der Standorte
coordination des sites

